



# Iowa Core Summary Report 2014-2015

Okoboji CSD  
(4890)



Iowa Testing Programs

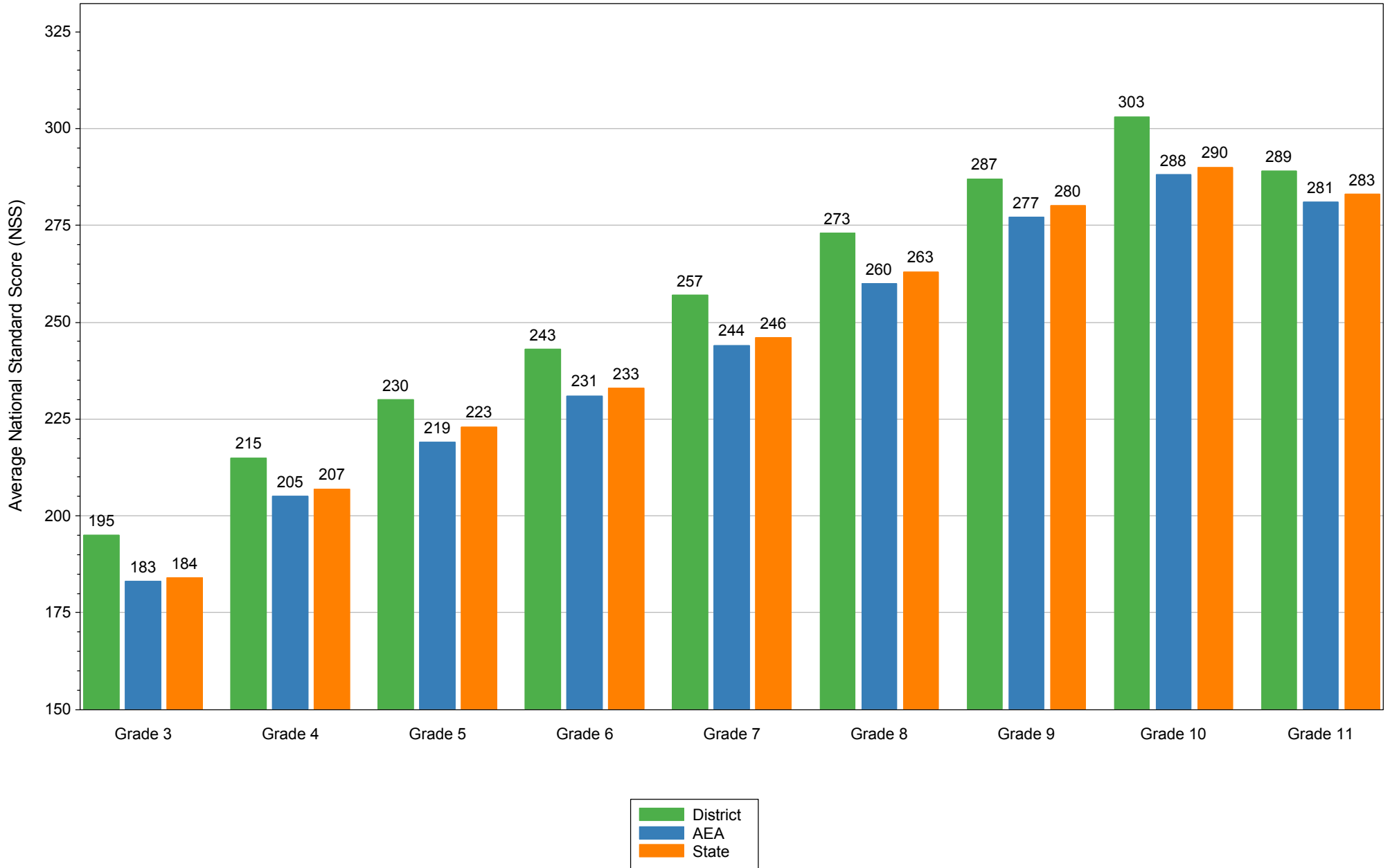
Created on 08/05/2015

# Overview

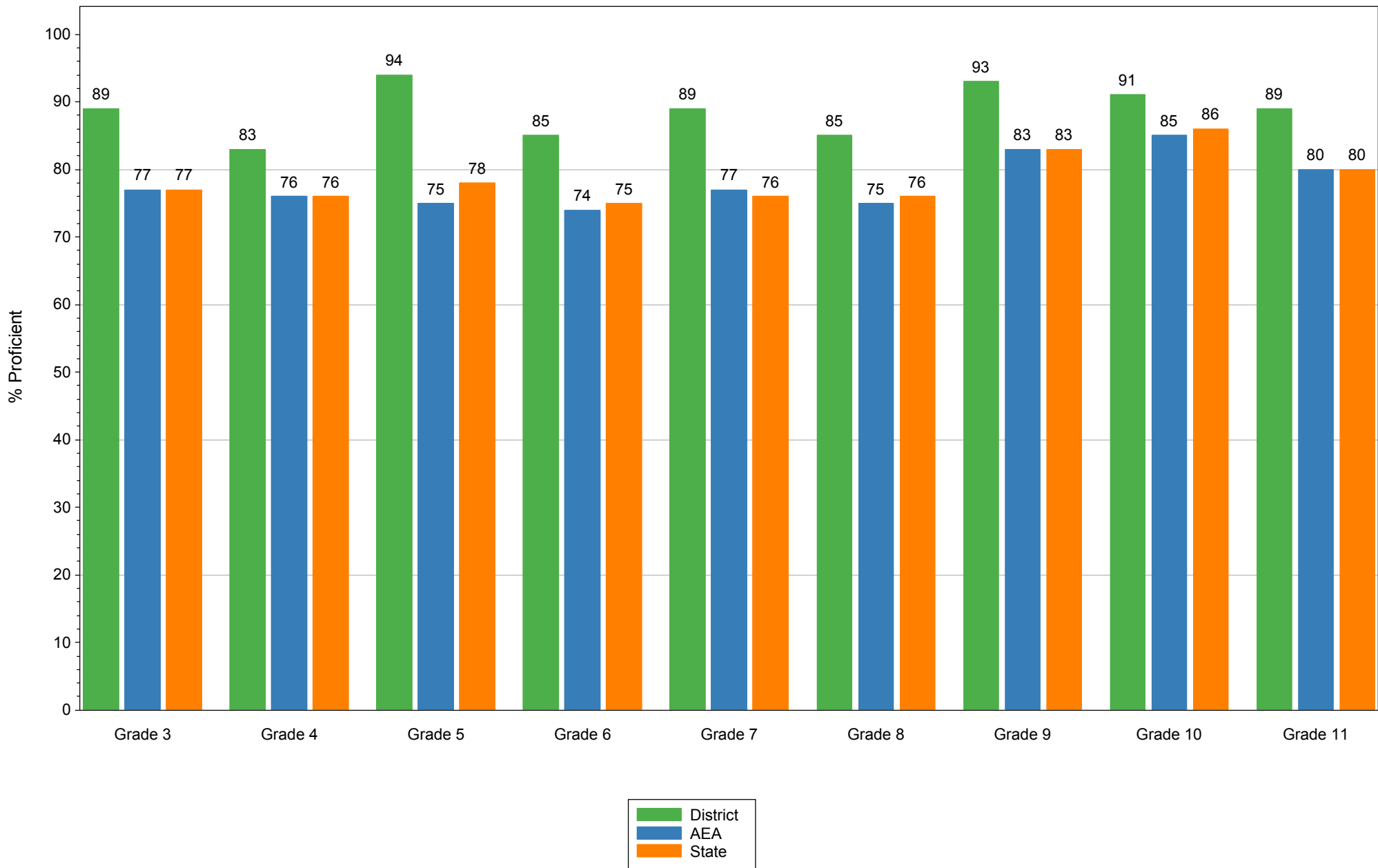
This summary provides student achievement information for your district on the *Iowa Assessments* for the 2014-2015 school year. Results are reported only for grades with 30 or more students.

- The **2014-2015 Snapshot** summarizes the performance of your students across grades and compares your students with those in your AEA and the state.
- **Proficiency** results show the performance of grade groups and compares your students to the AEA and state.
- **Growth** results show change for grade cohorts in your district.
- **Iowa Core** results show how your students perform on major domains of the Iowa Core in Reading and Mathematics.

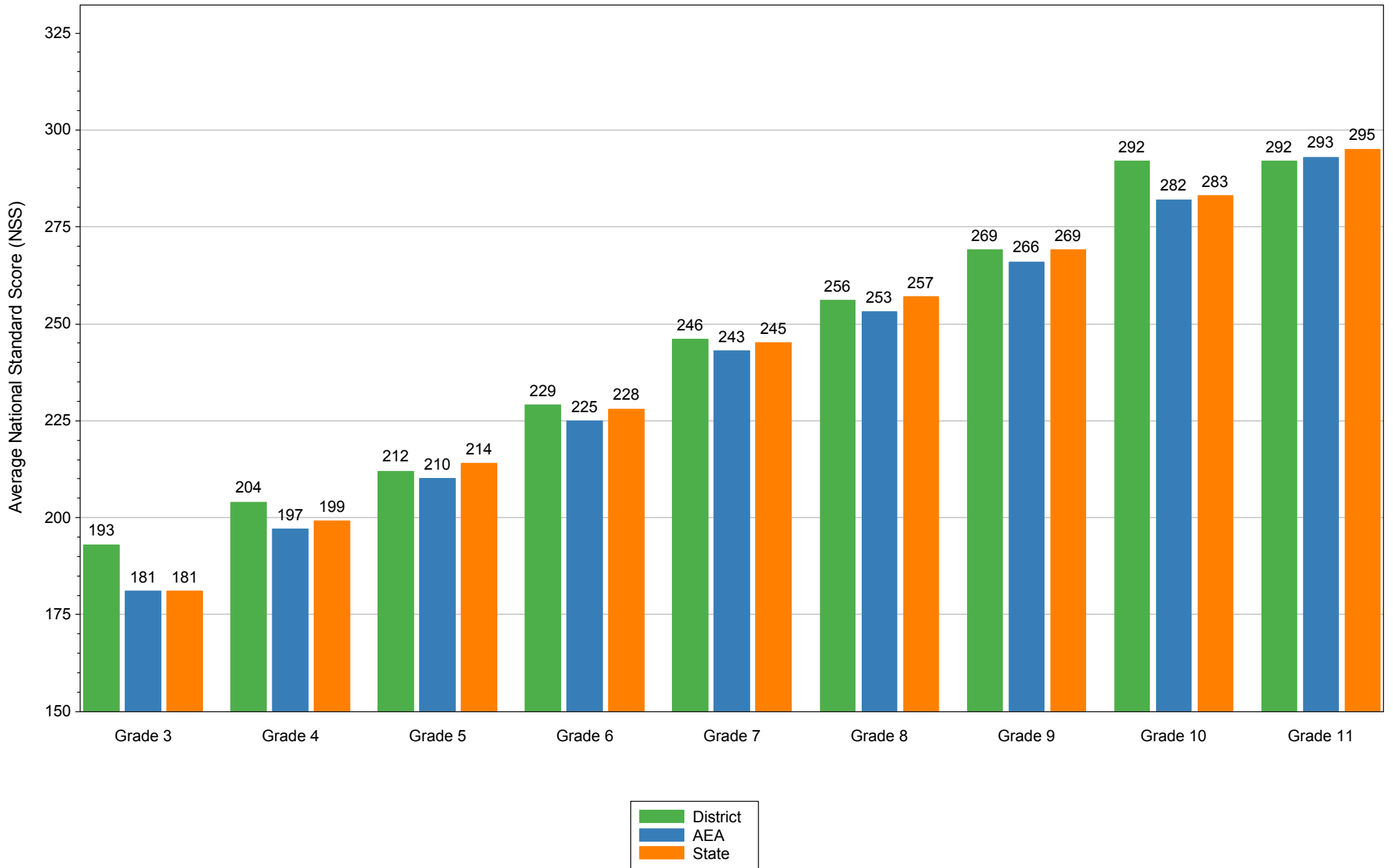
**Figure 1**  
**Reading Snapshot: Average NSS by Grade**  
**Okoboji CSD: 2014-2015**



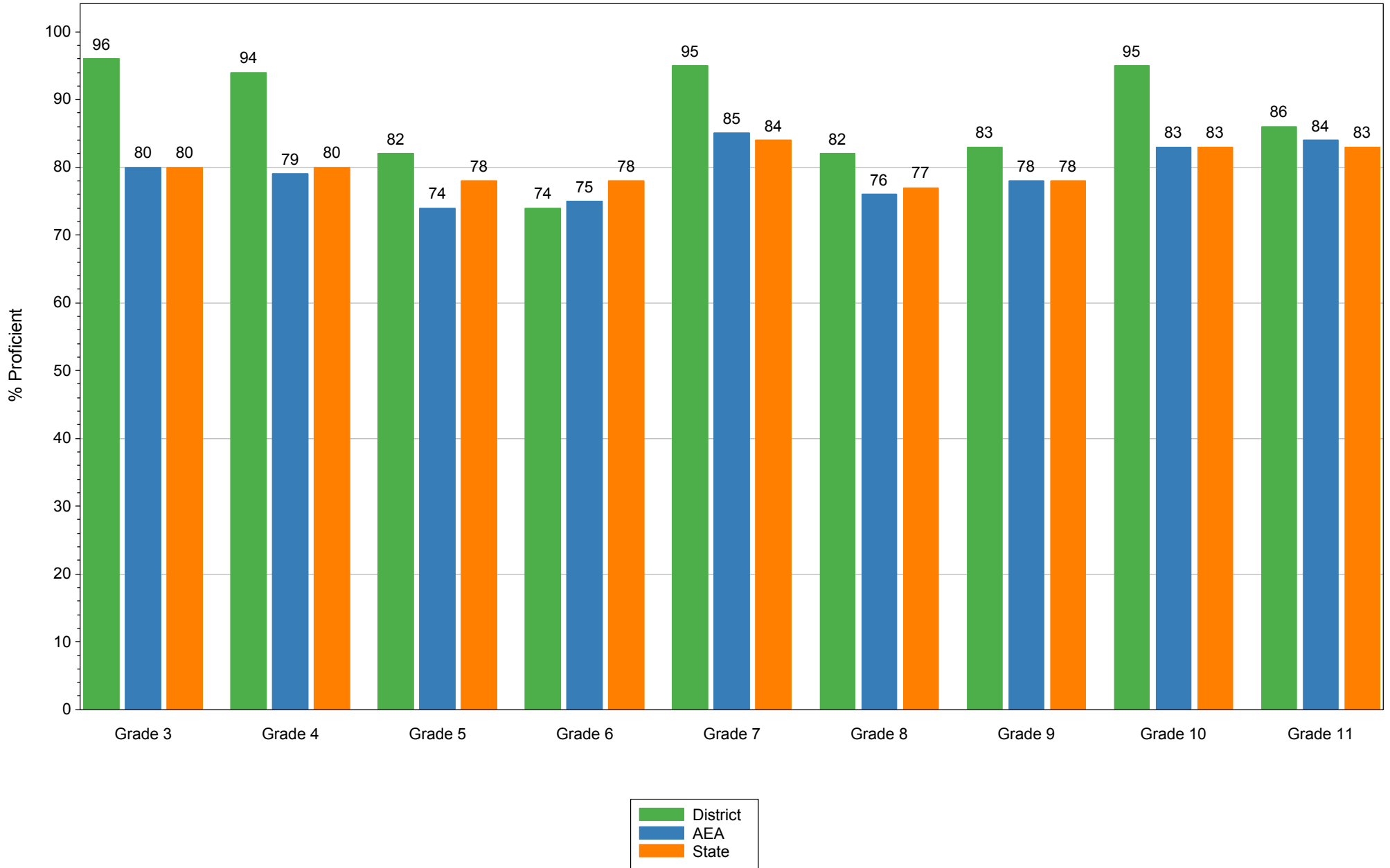
**Figure 2**  
**Reading: Percent Proficient by Grade**  
**Okoboji CSD: 2014-2015**



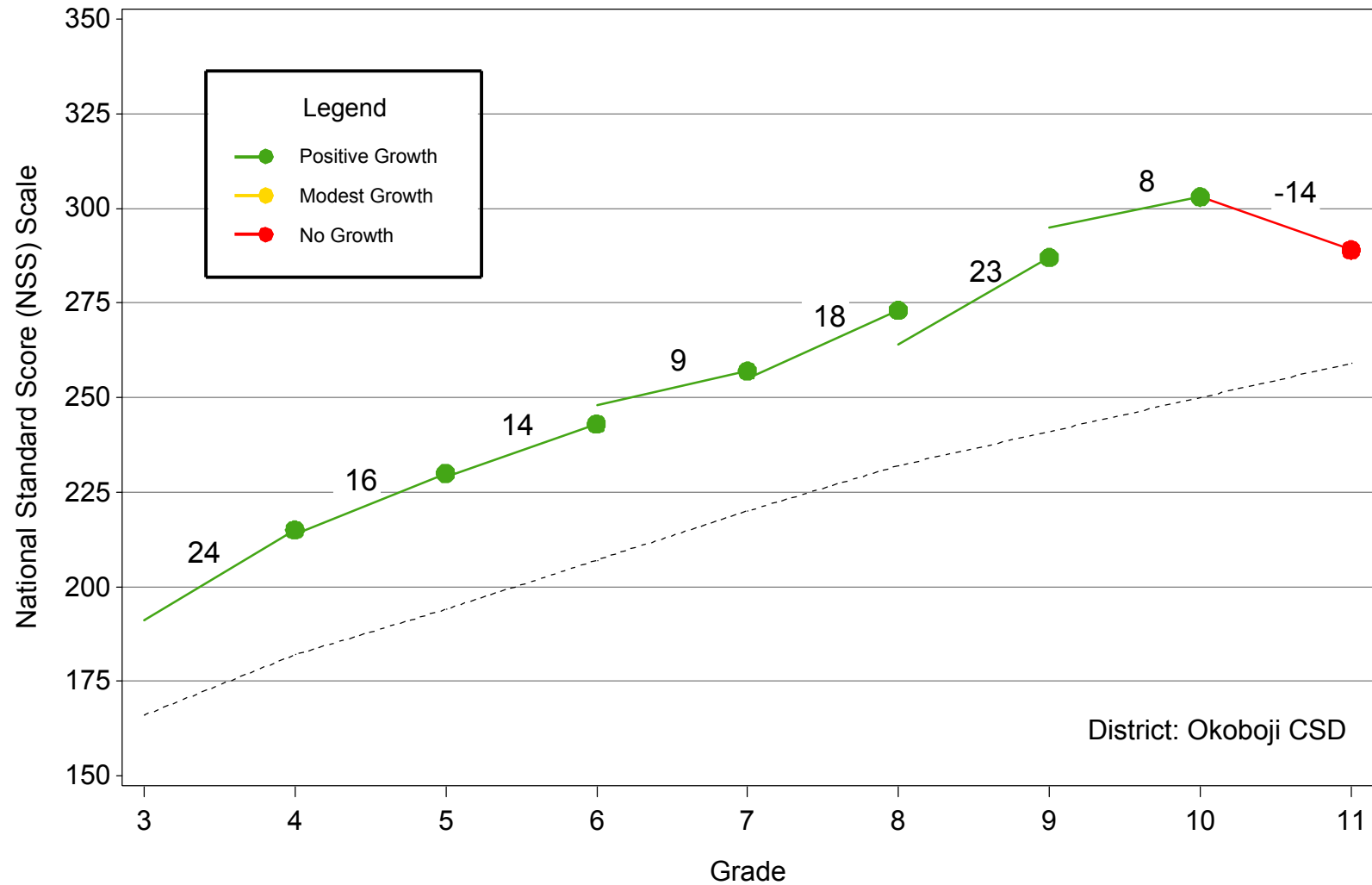
**Figure 3**  
**Mathematics Snapshot: Average NSS by Grade**  
**Okoboji CSD: 2014-2015**



**Figure 4**  
**Mathematics: Percent Proficient by Grade**  
**Okoboji CSD: 2014-2015**

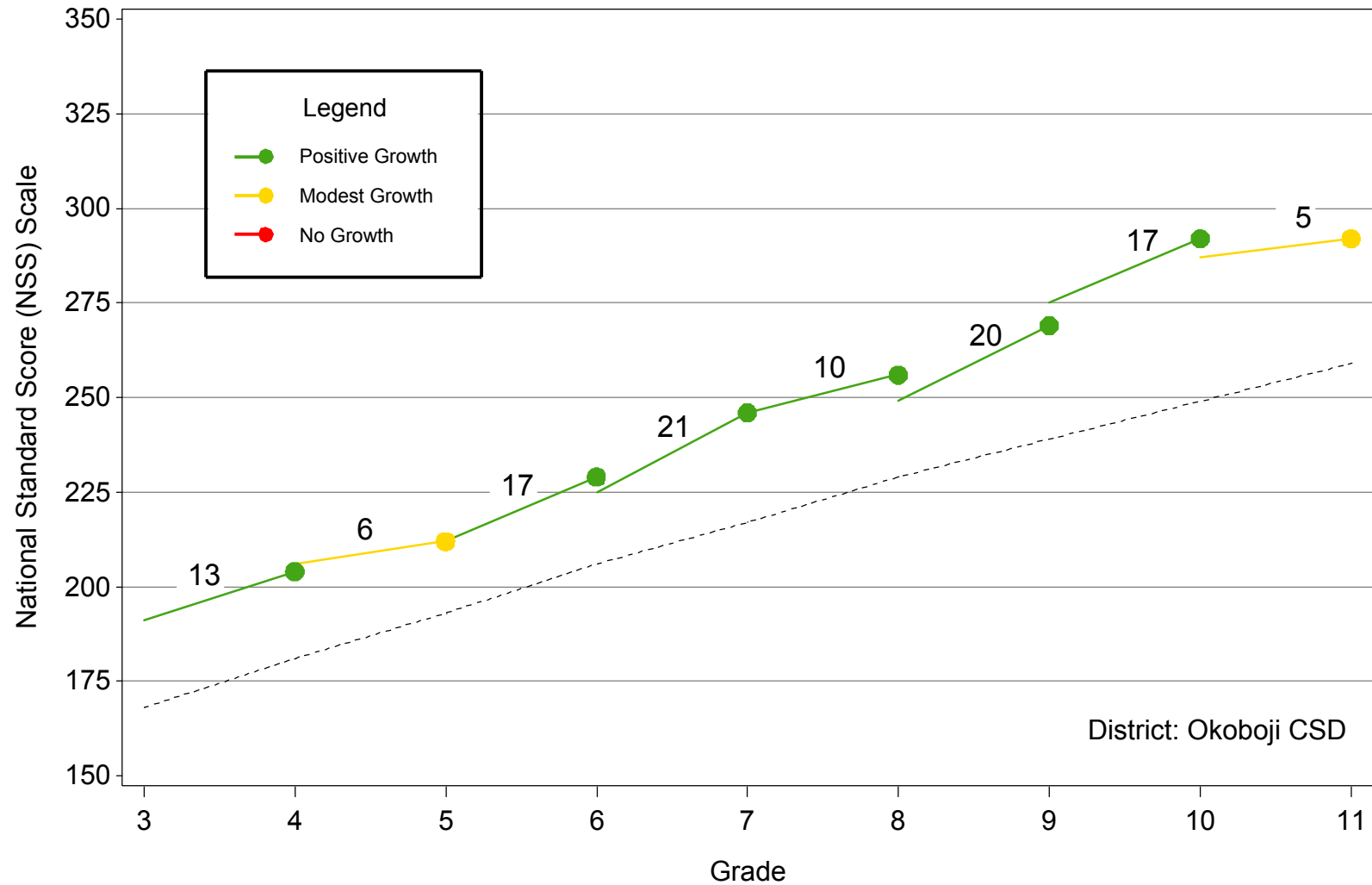


**Figure 5**  
**Growth in Reading**  
**For the 1314 to 1415 School Years**



The above graph depicts the growth of students in your district. Each line segment represents a different cohort. The dots indicate this year's average NSS for each grade. The line attached and the number above it show the amount of growth a particular cohort made over the past year. The dashed line indicates the level of achievement required for proficiency.

**Figure 6**  
**Growth in Mathematics**  
**For the 1314 to 1415 School Years**



The above graph depicts the growth of students in your district. Each line segment represents a different cohort. The dots indicate this year's average NSS for each grade. The line attached and the number above it show the amount of growth a particular cohort made over the past year. The dashed line indicates the level of achievement required for proficiency.



**Table 1**  
**Domain Performance in Reading on the Iowa Core: Grades 3-8**  
**Okoboji CSD: 2014-2015**

<b><i>Iowa Core: Reading</i></b>									
<b>Grade 3 (n=73)</b>					<b>Grade 4 (n=78)</b>				
<i>Domain</i>	# of <i>Points</i>	<i>Percent Correct</i>			<i>Domain</i>	# of <i>Points</i>	<i>Percent Correct</i>		
		<i>District</i>	<i>AEA</i>	<i>Iowa</i>			<i>District</i>	<i>AEA</i>	<i>Iowa</i>
Key Ideas & Details	28	76%	68%	69%	Key Ideas & Details	26	73%	68%	69%
Craft & Structure	11	70%	60%	61%	Craft & Structure	12	71%	65%	67%
Integration of Knowledge & Ideas	02	81%	71%	72%	Integration of Knowledge & Ideas	04	69%	64%	64%
Total	41				Total	42			
<b>Grade 5 (n=82)</b>					<b>Grade 6 (n=62)</b>				
<i>Domain</i>	# of <i>Points</i>	<i>Percent Correct</i>			<i>Domain</i>	# of <i>Points</i>	<i>Percent Correct</i>		
		<i>District</i>	<i>AEA</i>	<i>Iowa</i>			<i>District</i>	<i>AEA</i>	<i>Iowa</i>
Key Ideas & Details	24	72%	66%	69%	Key Ideas & Details	25	74%	68%	69%
Craft & Structure	15	76%	68%	70%	Craft & Structure	16	73%	69%	70%
Integration of Knowledge & Ideas	04	72%	64%	66%	Integration of Knowledge & Ideas	03	65%	56%	58%
Total	43				Total	44			
<b>Grade 7 (n=65)</b>					<b>Grade 8 (n=72)</b>				
<i>Domain</i>	# of <i>Points</i>	<i>Percent Correct</i>			<i>Domain</i>	# of <i>Points</i>	<i>Percent Correct</i>		
		<i>District</i>	<i>AEA</i>	<i>Iowa</i>			<i>District</i>	<i>AEA</i>	<i>Iowa</i>
Key Ideas & Details	27	72%	67%	67%	Key Ideas & Details	27	74%	69%	70%
Craft & Structure	14	72%	67%	67%	Craft & Structure	15	73%	66%	67%
Integration of Knowledge & Ideas	04	70%	59%	60%	Integration of Knowledge & Ideas	04	78%	70%	72%
Total	45				Total	46			

**Table 2**  
**Domain Performance in Reading on the Iowa Core: Grades 9-11**  
**Okoboji CSD: 2014-2015**

<b>Iowa Core: Reading</b>									
<b>Grade 9 (n=59)</b>					<b>Grade 10 (n=57)</b>				
<i>Domain</i>	# of <i>Points</i>	<i>Percent Correct</i>			<i>Domain</i>	# of <i>Points</i>	<i>Percent Correct</i>		
		<i>District</i>	<i>AEA</i>	<i>Iowa</i>			<i>District</i>	<i>AEA</i>	<i>Iowa</i>
Key Ideas & Details	21	70%	65%	67%	Key Ideas & Details	23	70%	62%	63%
Craft & Structure	16	70%	65%	66%	Craft & Structure	13	79%	69%	70%
Integration of Knowledge & Ideas	03	72%	63%	65%	Integration of Knowledge & Ideas	04	77%	70%	71%
Total	40				Total	40			

<b>Grade 11 (n=70)</b>				
<i>Domain</i>	# of <i>Points</i>	<i>Percent Correct</i>		
		<i>District</i>	<i>AEA</i>	<i>Iowa</i>
Key Ideas & Details	24	67%	62%	63%
Craft & Structure	12	70%	66%	68%
Integration of Knowledge & Ideas	04	65%	56%	58%
Total	40			

**Table 3**  
**Domain Performance in Mathematics on the Iowa Core: Grades 3-8**  
**Okoboji CSD: 2014-2015**

<b>Iowa Core: Mathematics</b>									
<b>Grade 3 (n=73)</b>					<b>Grade 4 (n=78)</b>				
<i>Domain</i>	# of <i>Points</i>	<i>Percent Correct</i>			<i>Domain</i>	# of <i>Points</i>	<i>Percent Correct</i>		
		<i>District</i>	<i>AEA</i>	<i>Iowa</i>			<i>District</i>	<i>AEA</i>	<i>Iowa</i>
Operations & Algebraic Thinking	14	77%	67%	68%	Operations & Algebraic Thinking	17	73%	68%	70%
Number & Operations in Base 10	06	73%	62%	63%	Number & Operations in Base 10	08	69%	64%	65%
Number & Operations - Fractions	02	79%	72%	74%	Number & Operations - Fractions	02	58%	60%	63%
Measurement & Data	22	76%	68%	68%	Measurement & Data	22	73%	69%	70%
Geometry	06	70%	60%	60%	Geometry	06	62%	54%	56%
Total	50				Total	55			
<b>Grade 5 (n=82)</b>					<b>Grade 6 (n=62)</b>				
<i>Domain</i>	# of <i>Points</i>	<i>Percent Correct</i>			<i>Domain</i>	# of <i>Points</i>	<i>Percent Correct</i>		
		<i>District</i>	<i>AEA</i>	<i>Iowa</i>			<i>District</i>	<i>AEA</i>	<i>Iowa</i>
Operations & Algebraic Thinking	15	68%	64%	67%	Ratios & Proportional Relationships	05	49%	49%	51%
Number & Operations in Base 10	11	55%	59%	62%	The Number System	19	62%	61%	62%
Number & Operations - Fractions	02	56%	53%	57%	Expressions & Equations	09	64%	63%	65%
Measurement & Data	23	70%	68%	70%	Geometry	14	59%	57%	59%
Geometry	09	54%	55%	57%	Statistics & Probability	09	63%	61%	63%
Total	60				Mathematical Practices, Measurement	09	72%	70%	70%
Total	60				Total	65			
<b>Grade 7 (n=65)</b>					<b>Grade 8 (n=72)</b>				
<i>Domain</i>	# of <i>Points</i>	<i>Percent Correct</i>			<i>Domain</i>	# of <i>Points</i>	<i>Percent Correct</i>		
		<i>District</i>	<i>AEA</i>	<i>Iowa</i>			<i>District</i>	<i>AEA</i>	<i>Iowa</i>
Ratios & Proportional Relationships	09	70%	62%	63%	The Number System	16	60%	61%	61%
The Number System	17	67%	63%	63%	Expressions & Equations	20	67%	61%	63%
Expressions & Equations	10	64%	62%	63%	Functions	02	47%	49%	50%
Geometry	15	49%	52%	53%	Geometry	17	49%	50%	52%
Statistics & Probability	10	49%	49%	51%	Statistics & Probability	12	59%	62%	63%
Mathematical Practices, Measurement	09	71%	70%	71%	Mathematical Practices, Measurement	08	57%	53%	56%
Total	70				Total	75			

**Table 4**  
**Domain Performance in Mathematics on the Iowa Core: Grades 9-11**  
**Okoboji CSD: 2014-2015**

<b>Iowa Core: Mathematics</b>									
<b>Grade 9 (n=59)</b>					<b>Grade 10 (n=57)</b>				
<i>Domain</i>	<i># of Points</i>	<i>Percent Correct</i>			<i>Domain</i>	<i># of Points</i>	<i>Percent Correct</i>		
		<i>District</i>	<i>AEA</i>	<i>Iowa</i>			<i>District</i>	<i>AEA</i>	<i>Iowa</i>
Number & Quantity	17	49%	47%	50%	Number & Quantity	14	56%	51%	52%
Algebra	07	45%	45%	48%	Algebra	09	56%	52%	54%
Functions	02	53%	53%	56%	Functions	02	71%	50%	52%
Geometry	08	52%	49%	50%	Geometry	08	56%	51%	52%
Statistics & Probability	06	54%	52%	54%	Statistics & Probability	07	58%	56%	56%
Total	40				Total	40			

<b>Grade 11 (n=70)</b>				
<i>Domain</i>	<i># of Points</i>	<i>Percent Correct</i>		
		<i>District</i>	<i>AEA</i>	<i>Iowa</i>
Number & Quantity	12	51%	51%	52%
Algebra	10	55%	54%	55%
Functions	02	41%	39%	42%
Geometry	08	46%	47%	48%
Statistics & Probability	08	61%	59%	60%
Total	40			